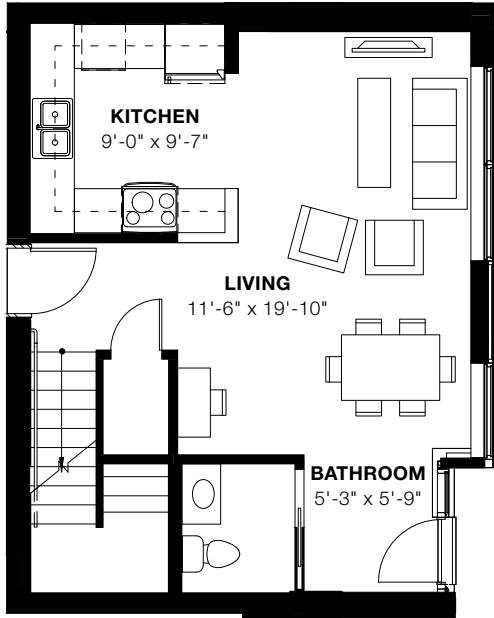
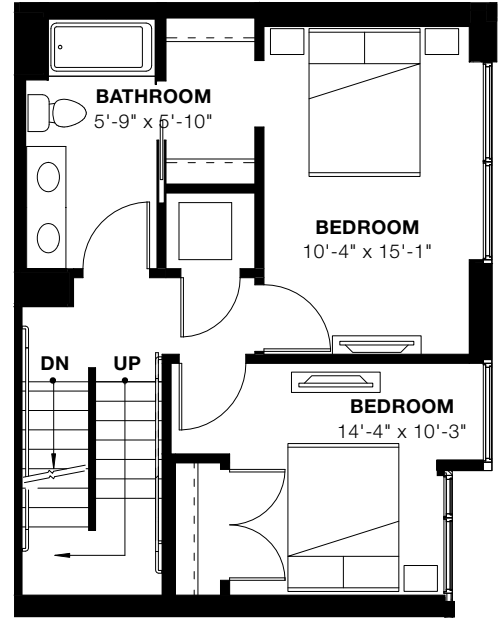




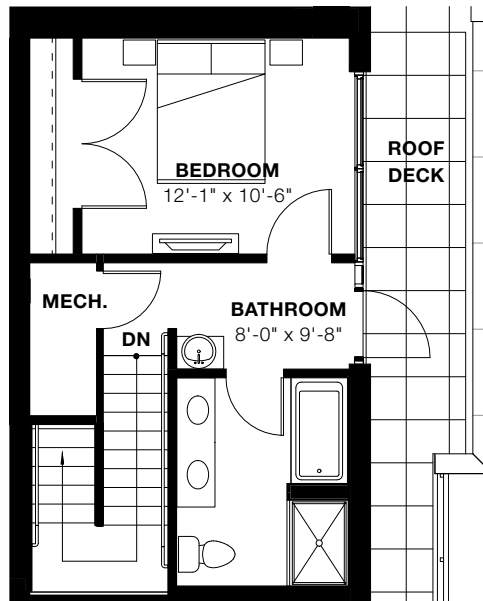
Ground Floor



2nd Floor



3rd Floor



E2 Apartments

1890 Maple Avenue
Evanston, IL 60201

847-733-1300
www.E2apts.com



Floor plans are artist's rendering. All dimensions are approximate. Actual product and specifications may vary in dimension or detail. Not all features are available in every apartment. Prices and availability are subject to change. Please see a representative for details.

T1 Townhome

Rent:

Available:

Sq. Ft.: 1,735–1,806

Living / Dining

- 9' Ceilings
- Oversized windows with views of downtown Evanston
- Plank flooring
- Built-in audio system with in-wall speakers
- Private balcony
- Full-size washer/dryer in all units
- Desk nook

Kitchen

- Quartz counter tops
- Glass tile backsplash
- Premium cabinetry
- GE stainless steel appliances
- Stainless steel 2 bowl undermount sink
- Grohe Concetto fixtures
- Ice maker
- Plank flooring

Bedroom

- Oversized windows with views of downtown Evanston
- 9' Ceilings
- Large closet in master bedroom
- Plank flooring
- Walk-in closet in second bedroom
- Large closet in third bedroom

Bathroom

- Quartz vanity top
- Premium cabinetry
- Porcelain undermount sink
- Grohe Concetto fixture
- Full height porcelain ceramic bathtub/shower tile
- Porcelain ceramic floor tile
- Five fixture bath in master
- Double vanity in second bath
- Powder room on ground floor

Floorplate

