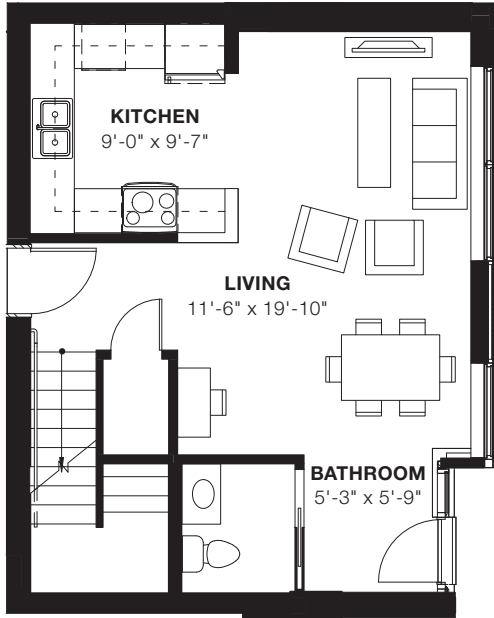
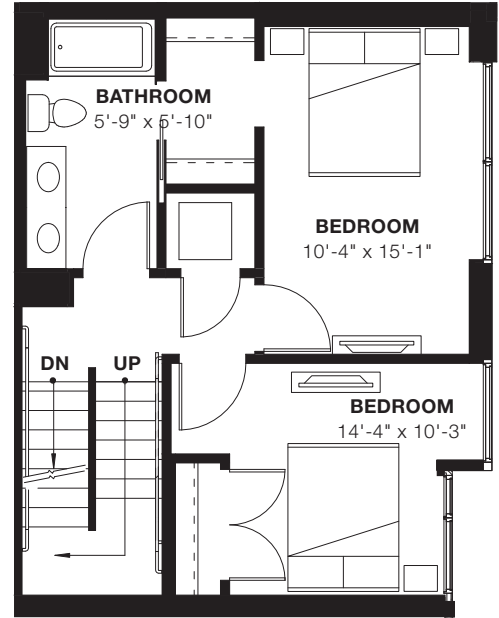




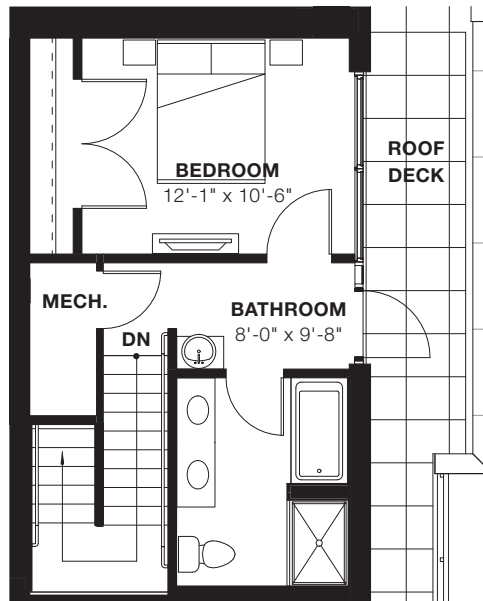
Ground Floor



2nd Floor



3rd Floor



T1 Townhome

Rent:

Available:

Sq. Ft.: 1,735–1,806

Living / Dining

- 9' Ceilings
- Oversized windows with views of downtown Evanston
- Plank flooring
- Built-in audio system with in-wall speakers
- Private balcony
- Full-size washer/dryer in all units
- Desk nook

Kitchen

- Quartz counter tops
- Glass tile backsplash
- Premium cabinetry
- GE stainless steel appliances
- Stainless steel 2 bowl undermount sink
- Grohe Conetto fixtures
- Ice maker
- Plank flooring

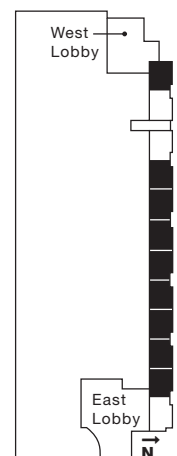
Bedroom

- Oversized windows with views of downtown Evanston
- 9' Ceilings
- Large closet in master bedroom
- Plank flooring
- Walk-in closet in second bedroom
- Large closet in third bedroom

Bathroom

- Quartz vanity top
- Premium cabinetry
- Porcelain undermount sink
- Grohe Conetto fixture
- Full height porcelain ceramic bathtub/shower tile
- Porcelain ceramic floor tile
- Five fixture bath in master
- Double vanity in second bath
- Powder room on ground floor

Floorplate



E2 Apartments

1890 Maple Avenue
Evanston, IL 60201

847-733-1300
www.E2apts.com

